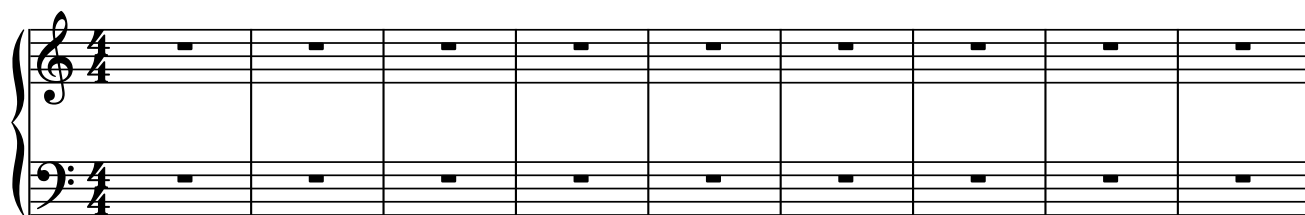
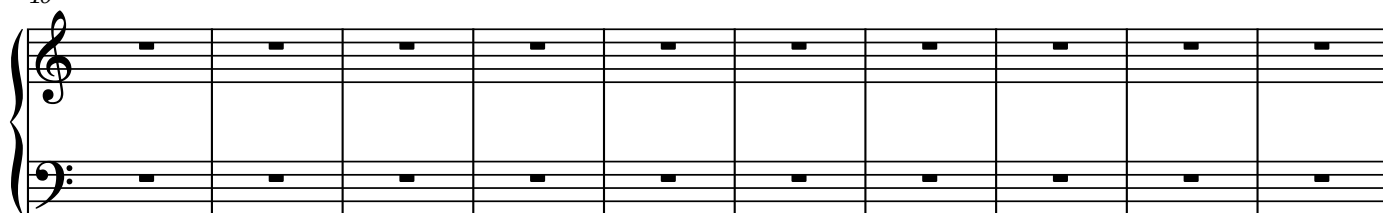


Untitled Project 1

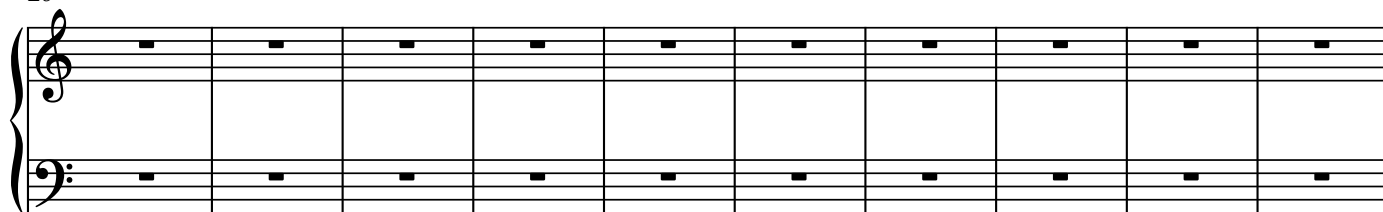
Secondo



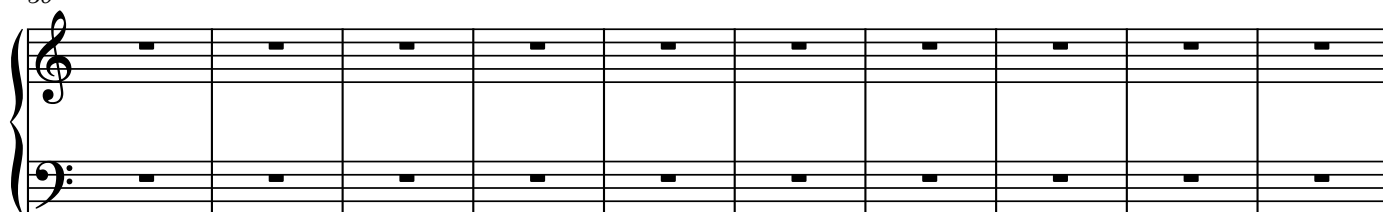
10



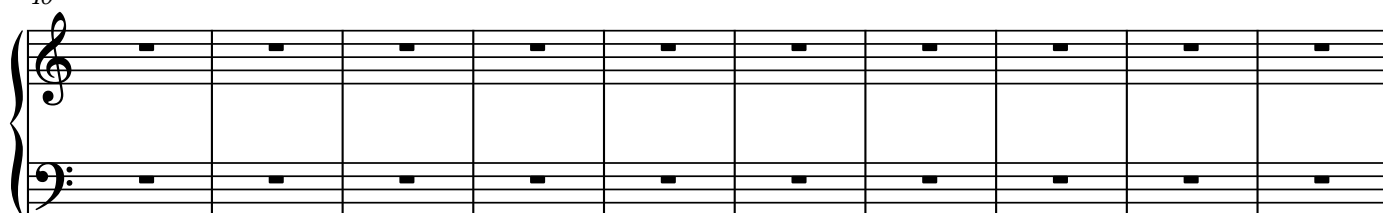
20



30

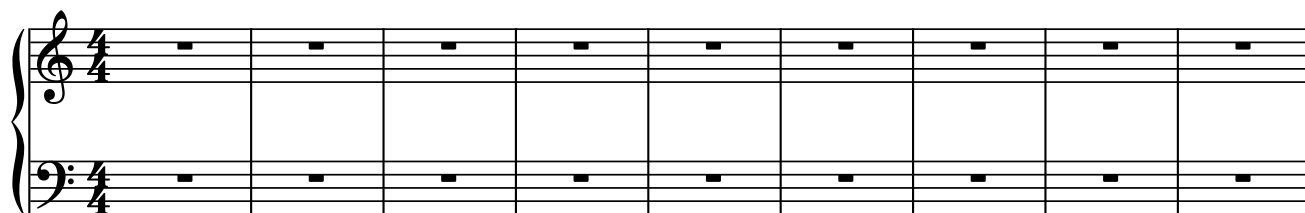


40

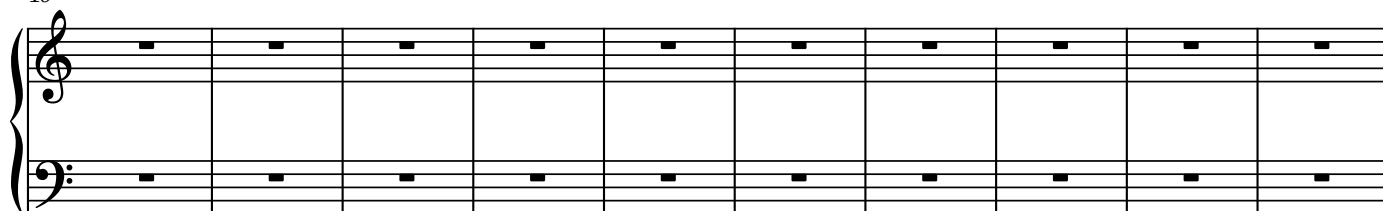


Untitled Project 1

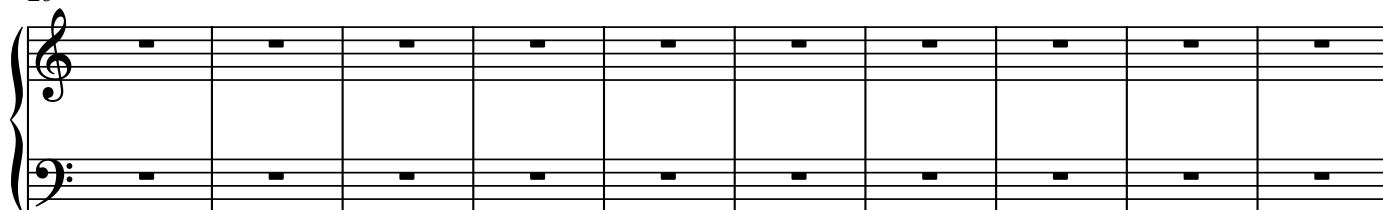
Primo



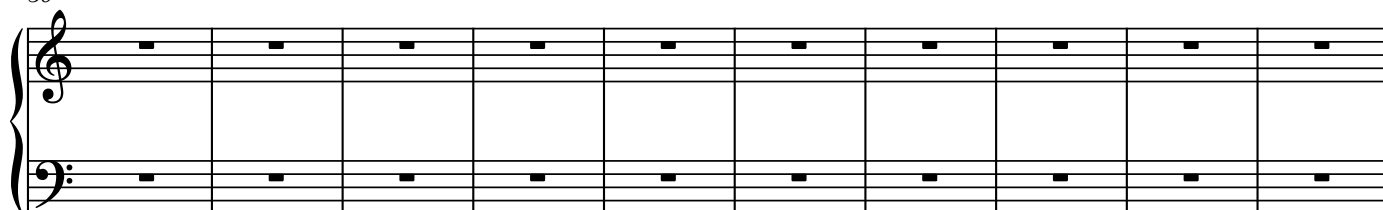
10



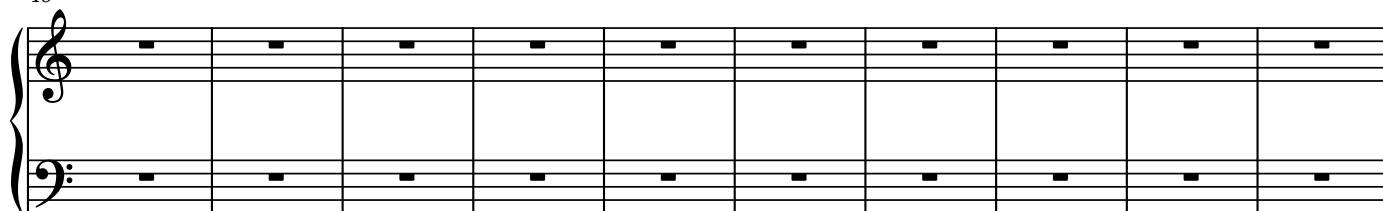
20



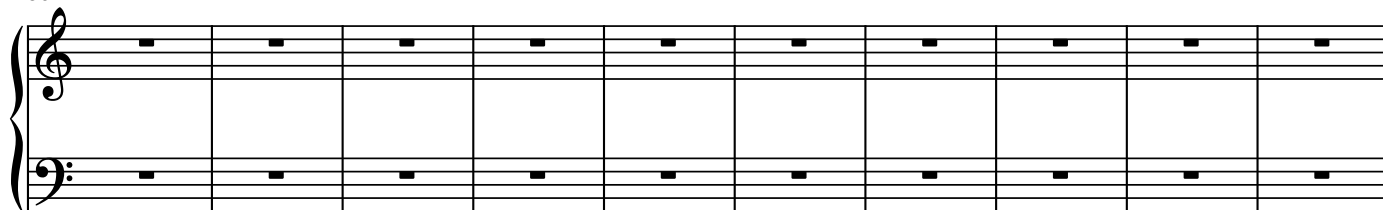
30



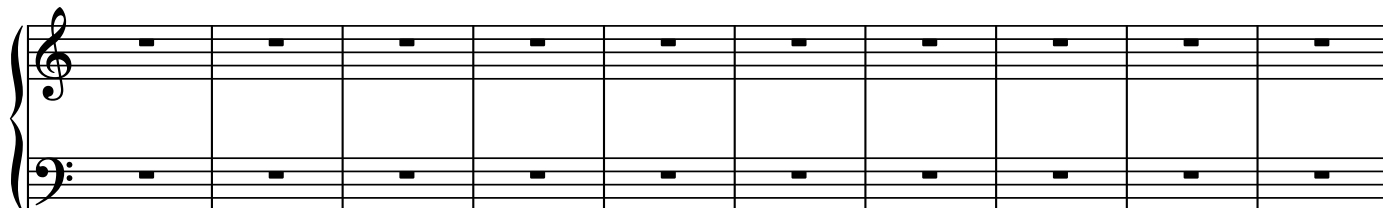
40



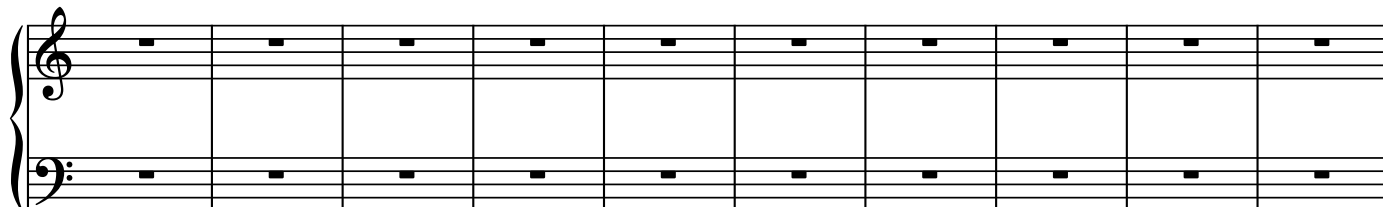
50



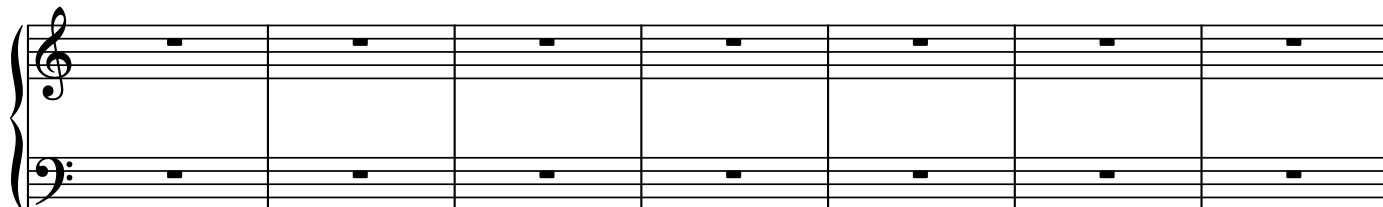
60



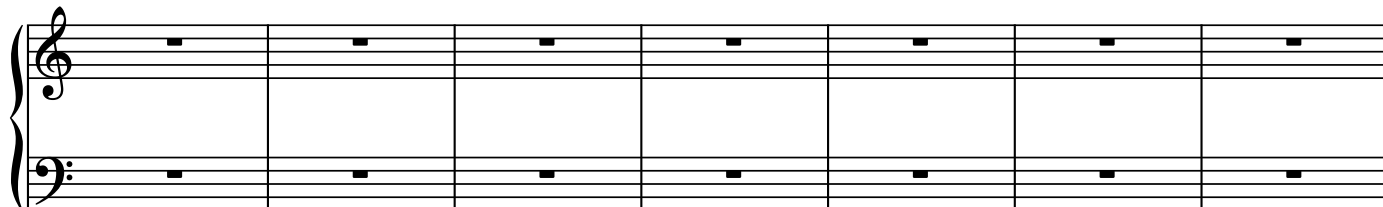
70



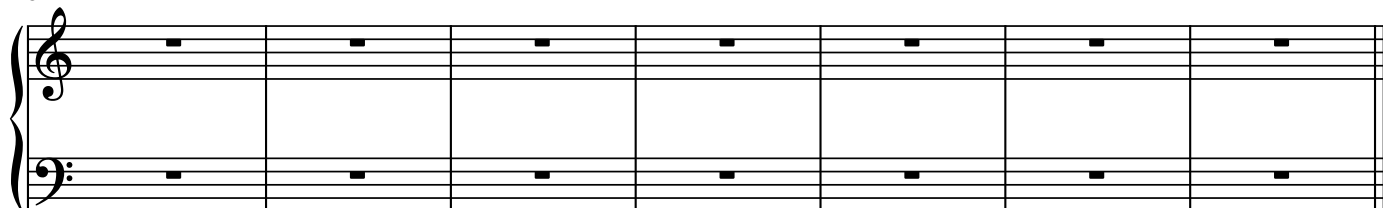
80



87



94



50

A musical staff system consisting of a grand staff (treble and bass clefs) with ten measures. Each measure contains a whole rest on both the treble and bass staves.

60

A musical staff system consisting of a grand staff (treble and bass clefs) with ten measures. Each measure contains a whole rest on both the treble and bass staves.

70

A musical staff system consisting of a grand staff (treble and bass clefs) with ten measures. Each measure contains a whole rest on both the treble and bass staves.

80

A musical staff system consisting of a grand staff (treble and bass clefs) with seven measures. Each measure contains a whole rest on both the treble and bass staves.

87

A musical staff system consisting of a grand staff (treble and bass clefs) with seven measures. Each measure contains a whole rest on both the treble and bass staves.

94

A musical staff system consisting of a grand staff (treble and bass clefs) with seven measures. Each measure contains a whole rest on both the treble and bass staves. The system concludes with a double bar line.