

Modes

Ctrl/Cmd +

1

2

3

4

5

Video F4

F3 Mixer

SPACE Play/Stop

P Play From Selection

Ctrl/Cmd + R Record

Num . Rewind to Start of Flow

F2 Transport

Setup

Write

Engrave

Play

Print

Full score

▼

📄

📄

🎬

🔊

🔌

1.1.1.000

⏮

▶

⏸

🎵

120

🔊

🔗

⏮

⏭

📄

Ctrl/Cmd + 7 Show/hide left zone

🖱

Shift + N Note Input

🎵

K Pitch Before Duration

🎵

Q Chords

🎵

I Insert Mode (Alt+I to cycle scope)

🔒

L Lock Duration

🔗

O Force Duration

🎵

V Next Voice (Shift+V to create voice)

🎵

. Dotted notes (Alt+. to cycle no. of dots)

🎵

, Rests

🎵

; Tuplets

🎵

/ Grace Notes (Alt+/ to cycle slashed/unslashed)

🎵

T Ties

✂

U Scissors

> [ • ]

^ ' - \#

/ { ! }

~ " @ ~

WIN  
MAC

1

2

3

4

5

6

7

8

9

0

-

=

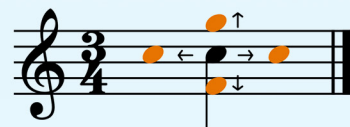
Double-tap number for dotted note

Input nearest pitch A - G

Input above, add Shift + Alt

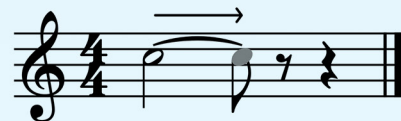
Input below, add Ctrl (win only) + Alt

Move notes left/right Alt + ← / →

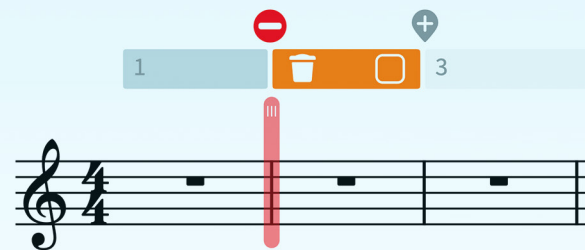


Modify pitch Alt + ↑ / ↓

Shorten / lengthen notes Shift + Alt + ← / →



System Track Alt + T



Stop Position

Shift + Alt + I

Slur S

Hairpin < / >



Flip item  
(inc. to other side of note/staff)

F

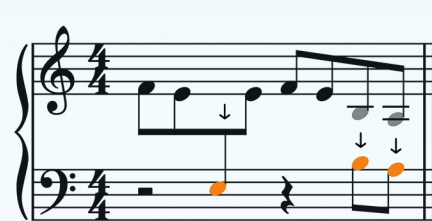
Repeat R



Select more

Ctrl/Cmd + Shift + A

Cross to staff above/below N / M



Move to staff above/below

Alt + N / M

Show/hide right zone

Ctrl/Cmd + 9

🎨

Notation Popovers Shift +

Clefs C

🎵

Key Signatures K

##

Time Signatures (Meter) M

3/4

Tempo T

♩=72

Dynamics D

f

Ornaments O

🎵

Repeat Structures R

🎵

Bars and Barlines B

🎵

Holds and Pauses H

🎵

Playing Techniques P

🎵

Cues U

🎵

Rehearsal Marks A

A

Text (Shift+Alt+X for System Text) X

T

Lyrics L

v1.

Chord Symbols Q

C7

Note Tools I

🎵

Fingering F

5

Figured Bass G

6/8

🎵

Concert Pitch

Transposed Pitch

Bar 1

Rest (Up-stem Voice 1)

⏮

Follow playhead

🖱

Page View

Galley View

📄

📄

📄

📄

📄

📄

📄

📄

Alt + [ / ] Decrease/Increase Rhythmic Grid

Show/hide lower zone Ctrl/Cmd + 8

Select/Hand tool Alt + H

Alt + Z Zoom X Z