

SoundIron Olympus Choir Elements for Dorico

What's included

- This very important read me file
- Olympus Elements.dorico_pt – the playback template.

You need to have already installed Dorico 3.5.12 (or later) and the Olympus Choir Elements

Elements Confusion

Dorico Elements and Dorico Pro have the Olympus Choir Micro included by default.

Olympus Choir Elements is an optional upgrade for the choir which includes extra vowel sounds and a 'true legato' option. The 'Elements' portion of the name from SoundIron has nothing to do with Dorico Elements – Olympus Choir Elements can be used with Dorico Pro, Dorico Elements & Dorico SE.

Playback Template

First, import the playback template (Olympus Elements.dorico_pt) by dragging and dropping the file on to the Dorico hub.

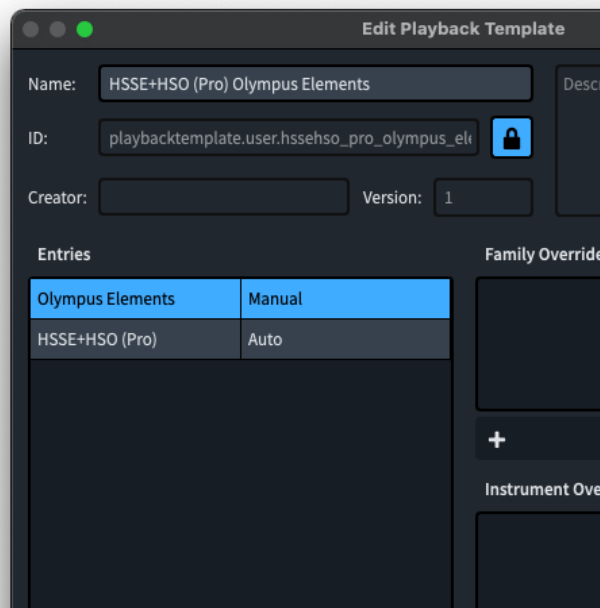
Alternatively, open any Dorico project and use **Play > Playback Template...** and then the **Import...** button.

In any of your Dorico projects you can now use the Olympus Choir Elements sounds by applying the playback template from the **Play > Playback Template...** dialog – but that will only load sounds for singers, not any other instruments, so keep reading...

Using with other libraries

As this playback template only contains information for Dorico players who are singers, you might want to create a custom set up using the Olympus Choir Elements for singers and the Dorico default HSSE+HSO, NotePerformer or other library for other instruments. To set this up, import the .dorico_pt playback template and then in Play mode go to the **Play > Playback Template...** menu. Either choose an existing template as a starting point and at the bottom of the dialog press the **Duplicate** button, or press the **Add Playback Template** option to make a new template.

Give it a suitable name, click on the **Add Manual** button and add the **Olympus Elements** endpoint from the list. Add any other libraries as necessary using the **Add Manual** or **Add Automatic** buttons and use the arrow buttons to sort the order, remembering that Dorico starts from the top of the list and works down when assigning instruments to libraries.



In the example above, the Olympus Elements entry only contains information about singers (so no Family or Instrument Overrides are needed), and will be used first only for players who are singers. The default HSSE+HSO sounds will then be used for all other instruments.

Once you've created your Playback Template you can choose it and use the **Apply and Close** button to have Dorico re-load the sounds on any project using the libraries you've chosen.

If you wish you can make this your default playback template by going to **Preferences > Play** and choosing your template from the dropdown list.

Loading Instruments






Applying the playback template will then load one or two new entries in to your VST rack in the RH zone in Play mode depending on the choir players you have in your project.

There is an 'Olympus Elements Solo Players' and an 'Olympus Elements Section Players' instance, each of which will load the choir in to 12 slots (one for each of the different types of 'singer' instrument in Dorico). If you have e.g. two solo sopranos then Dorico will load another instance with 12 slots and assign the singer accordingly.

For each instrument Dorico will also load the expression map.

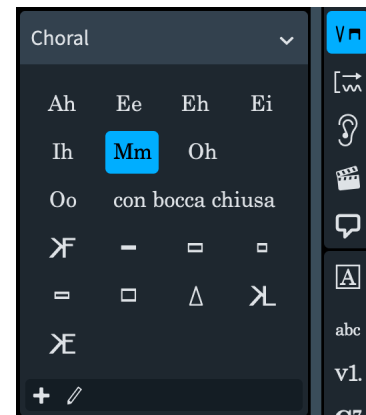
Oo, Ah Techniques, Eh?

Olympus Choir Elements will automatically use Marcato Ah as the natural/default sound. Staccato notes will automatically switch to the Staccato patch and slurs will automatically switch to the True Legato patch. Notes that match the 'long' condition e.g. a minim/half note in the tempo range 80-159bpm will use the relevant Sustain patch (see table below).

	Note Lengths				
	 semi-quaver 16th note	 quaver 8th note	 crotchet quarter note	 minim half note	 semi-breve whole note
Tempo	0-39	medium	long	very long	
	40-79	short	medium	long	very long
	80-159	very short	short	medium	long
	160-319		very short	short	medium
	320-639			very short	short
	640+				very short

Ee, Eh, Ei, Ih, Mm, Oh, and Oo vowel sounds are also available. To change to one of these use the Playing Techniques from the RH zone in Write mode or the Shift-P popover. Adding a technique to a player will change the sound and Dorico will then switch to e.g. Mm Staccato instead.

Please note that only Ah and Oo have True Legato, so the other techniques will switch to the relevant Sustain patch for slurred/legato passages.



Divisi

If you use the Dorico divisi feature you will have started with a section player. You can then enable independent voice playback and Dorico will add more slots for playback as required.

For more information please read the Dorico online help for [Enabling independent voice playback](#) or watch part of this [Discover Dorico live stream](#) for an example.

FAQs and Troubleshooting

Instrument Ranges

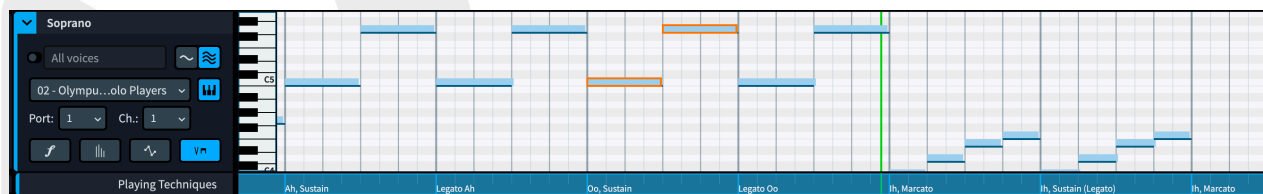
The Dorico instrument ranges (red notes) may not match the available pitches. Olympus Choir has a four octave range of sounds, from two octaves below middle C to two octaves above. You can see this range in the HALion player.

Too many channels in the mixer

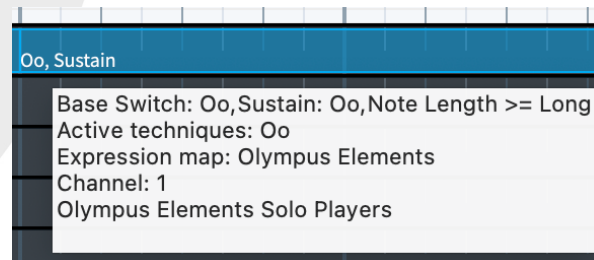
As each instance has slots loaded for 12 singers/instruments the mixer will then show 12 faders per instance. However if you are only using some of those slots you will still have 12 faders in the mixer by default. You can reduce this by reassigning the slots you are using and reducing the number of channels in the endpoint setup dialog if this is a bit problem for you.

Checking which technique is being used

If you need to check which technique is being triggered, use the Playing Techniques lane in Play mode and you'll see the techniques listed under the notes in the key editor.

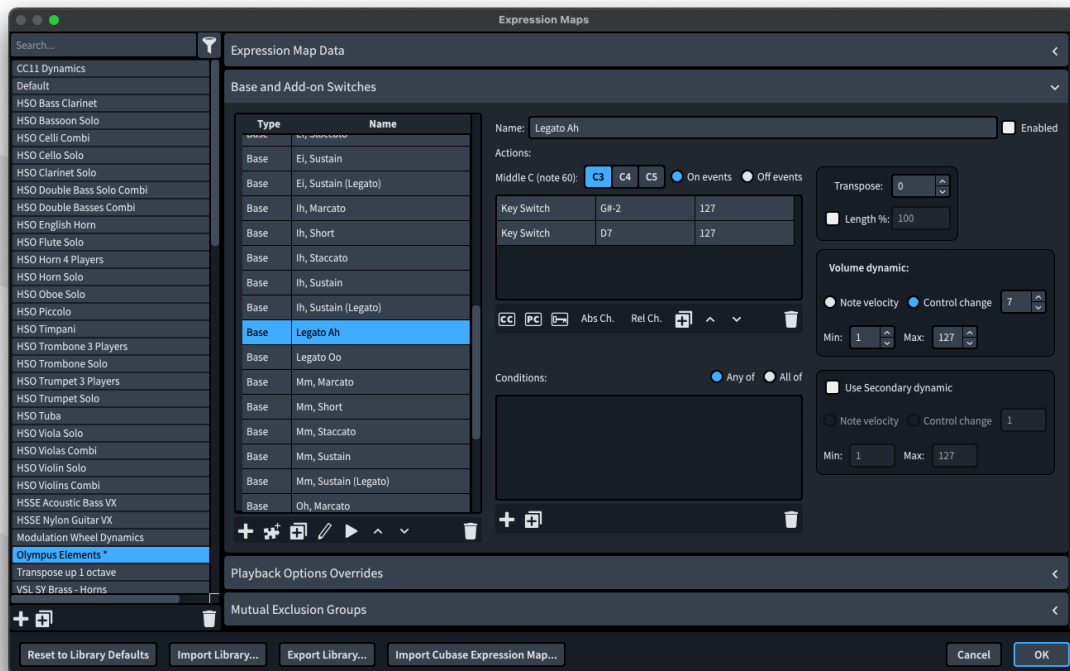


You can also hover your mouse over a technique and get more details too.



Turning some techniques off

If one or more techniques aren't suitable in one of your projects you can disable them in the expression map. In Dorico go to **Play > Expression Maps**, select the Expression Map that you want to edit and then select the technique e.g. Legato Ah and then on the top right-hand side untick the **Enabled** box.



Issues or Errors

If you find any issues with the Dorico template or playback template or would like to suggest changes or tweaks to it, please email discoverdorico@steinberg.de