

## Lesson 1a

### Frère Jacques

In this lesson we are going to create the song 'Frère Jacques' using Dorico.

To start, open the project called 'Frère Jacques' and you will have 8 blank bars to start that look like this:

## Frère Jacques



You will need the following shortcuts:

Note Length	
<b>5</b>	8 <sup>th</sup> notes
<b>6</b>	quarter note
<b>7</b>	half note

Note Pitches	
<b>C</b>	pitch C
<b>D</b>	pitch D
<b>E</b>	pitch E ( <i>etc</i> )

- Click on the first bar and the rest will turn orange
- Press the **Enter** key on your computer keyboard to turn on the caret (orange line) so you can input notes

Bar 1

- Press **6** to choose a quarter note
- Press the letters **C, D, E, C** to enter notes in the first bar

Bar 2

- Press the letters **C, D, E, C** again to enter the second bar

Bar 3

- Press the letters **E** and **F** and then press **7** to select a half note and then press letter **G**

Bar 4

- Press **6** for quarter notes and then press **E** and **F** again
- Press **7** for half notes and then press letter **G**

Bar 5

- Press **5** for 8<sup>th</sup> notes and then press **G, A, G, F**
- Type **6** for quarter notes and then type **E** and then **C**

Bar 6

- Press **5** for 8<sup>th</sup> notes and again press **G** and you'll notice that since Dorico picks the closest G this time it is in the wrong octave – to move this note up to the correct octave, simply hold down the **Ctrl + Alt** keys and press the **Up arrow**
- Now continue by pressing **A, G, F** then **6, E, C**

Bar 7

- As you should still have quarter note selected, simply press **C, G**
- Press **7** for half note and then **C**

Bar 8

- Do the same for this bar: **6, C, G, 7, C**

It should now look like this:

## Frère Jacques



## Lesson 1b

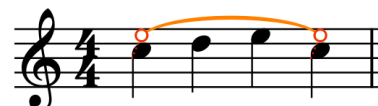
In this lesson we'll add phrase markings and dynamics to the Frère Jacques flute piece you have completed.

### Adding phrasing

To add a slur or phrase marking you can simply select a note and press **S**.

To add a slur over more notes, click on the first note, hold down **Ctrl** and click on the last note and then press **S**.

To add a slur over all the notes in a bar you can also select the bar (by clicking between a couple of notes) and then when all the notes are selected, press **S**.



Select each bar and press **S** to add a slur on each bar.



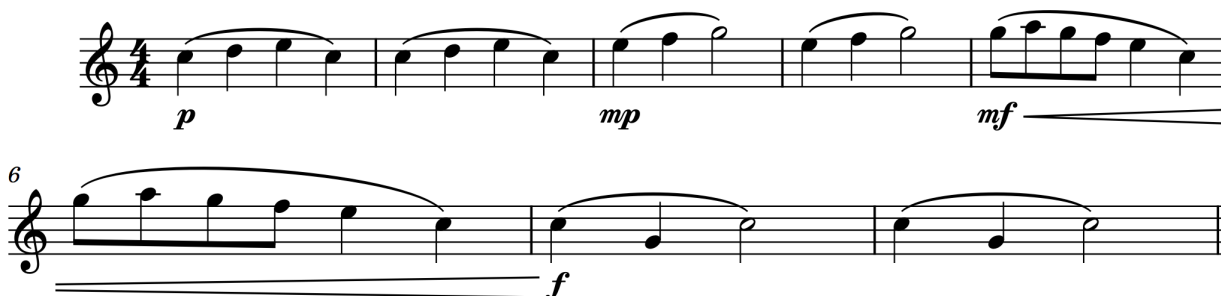
### Adding dynamics

Next we'll add dynamics to the piece, making each two bar phrase louder than the ones before.

- Select the very first note in bar 1.
- Press **Shift + D** for the dynamics popover, then type the letter **p** and press **Enter**.
- Select the first note in bar 3.
- Press **Shift + D**, then type **mp** and press **Enter**.

Now we'll enter two dynamics and a crescendo hairpin all at the same time.

- Click on bar 5 to select all the notes, then hold down **Shift** and click on bar 6 so that all those notes are selected too.
- Press **Shift + D**, type **mf < f** and press **Enter**. Ask if you aren't sure where to find the hairpin sign on your computer keyboard.



## Lesson 1c

### Making a round

In this lesson we'll make Frère Jacques into a round for four instruments, starting with the flute example that we've already finished.

- At the top of the screen, click on **Setup**
- To add a new player press **Shift + P**, type **oboe** and press **Enter**
- Press **Shift + P**, type **clarinet** and press **Enter**
- Press **Shift + P**, type **bassoon** and press **Enter**
- At the top of the screen, click on **Write**

Now we'll copy the notes to the other instruments.

- Select bar 1 of the flute, go to the **Edit** menu and choose **Select to End Of Flow**
- Press **Ctrl + C** to copy those notes
- Select bar 3 of the oboe
- Press **Ctrl + V** to paste the notes in to the oboe part
- Select bar 5 of the clarinet
- Press **Ctrl + V** to paste the notes in to the clarinet part
- Select bar 7 of the bassoon
- Press **Ctrl + V** to paste the notes in to the bassoon part and while the notes are still selected (orange) press **Ctrl + Alt + down arrow** to move the notes down by an octave.

It should now look like this:

The image displays two pages of a musical score for 'Frère Jacques' in 4/4 time. The score is arranged in a round for four instruments: Flute (Fl.), Oboe (Ob.), Clarinet in Bb (Cl. in Bb), and Bassoon (Bsn.).

**Page 1:** Shows measures 1 through 8. The Flute part starts in measure 1 with a *p* dynamic. The Oboe part starts in measure 3 with a *p* dynamic. The Clarinet in Bb part starts in measure 5 with a *p* dynamic. The Bassoon part starts in measure 7 with a *p* dynamic. Dynamics are marked as *mp* for the flute and *f* for the other instruments in later measures.

**Page 2:** Shows measures 9 through 13. The Flute part continues with a *mf* dynamic. The Oboe part continues with a *mp* dynamic. The Clarinet in Bb part continues with a *p* dynamic. The Bassoon part continues with a *p* dynamic. Dynamics are marked as *f* for the flute and *mf* for the other instruments in later measures.

## Lesson 1d

In this lesson we'll add a soprano singer and some lyrics.

### Adding a singer

- Go back to Setup mode
- Press **Shift + P**, type **soprano** and press **Enter** to add a singer to your piece.
- In the left-hand panel, click on the new soprano singer and drag them to the top of the list. This will also move the soprano staff to the top of the page of music.
- Select bar 1 of the soprano and press **Ctrl + V** to paste the notes in to that part too. The dynamics will automatically move to above the staff, to make space for the lyrics.

### Adding Lyrics

- Select the first note in the soprano part and press **Shift + L** to start the dynamics popover.
- Type in the lyrics, press spacebar to move to the next note, and separate the syllables with hyphens as follows (don't worry about the accent è if you don't want to):  
**Frè-re Jac-ques, Frè-re Jac-ques, Dor-mez-vous? Dor-mez-vous? Son-nez les ma-ti-nes!  
Son-nez les ma-ti-nes! Ding dang dong. Ding dang dong.**

It should now look like this:

The image displays two pages of musical notation for the piece "Frère Jacques".

The left page shows the first three measures. The Soprano part is at the top, with lyrics: "Frè - re Jac - ques, Frè - re Jac - ques, Dor - mez - vous?". The Flute part is below it, with dynamics *p* and *mp*. The Oboe, Clarinet in Bb, and Bassoon parts are also shown, with dynamics *p* and *mp*.

The right page shows measures 4 through 11. The Soprano part has lyrics: "Dor - mez - vous? Son - nez les ma - ti - nes! Son - nez les ma - ti - nes!". The Flute part has dynamics *mf*. The Oboe part has dynamics *mf* and *f*. The Clarinet in Bb part has dynamics *mp* and *mf*. The Bassoon part has dynamics *p* and *mp*. The page number "2" is visible at the top right.

## Note durations

<b>4</b>	16 <sup>th</sup> note
<b>5</b>	8 <sup>th</sup> note
<b>6</b>	quarter note
<b>7</b>	half note
<b>8</b>	whole note
<b>.</b> (period)	rhythm dot
<b>T</b>	tie

## Note pitches

<b>A-G</b>	Pitch A-G
<b>-</b>	flat
<b>=</b>	sharp
<b>0</b>	natural

## Copying

<b>R</b>	Repeat the selection
<b>Alt + Click</b>	Copy and paste the selection
<b>Ctrl + C</b>	Copy
<b>Ctrl + V</b>	Paste

## Useful

<b>Enter</b>	Note input (caret on/off)
<b>i</b>	Insert on/off
<b>S</b>	Slur
<b>Ctrl + Z</b>	Undo
<b>F3</b>	Mixer

## Adding items

<b>Shift + B</b>	Bars and barlines popover
<b>Shift + D</b>	Dynamics popover
<b>Shift + K</b>	Key Signatures popover
<b>Shift + M</b>	Meter / time signatures popover
<b>Shift + T</b>	Tempo popover
<b>Shift + X</b>	Text

## Playback

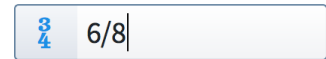
<b>P</b>	Play from selection
<b>Spacebar</b>	Play / Stop
<b>Shift + Spacebar</b>	Play from last start position
<b>Shift + Alt + Spacebar</b>	Play from start of flow

## Starting your own composition project

- To start a new project in Dorico, type **Ctrl + N** (**Cmd + N** on Mac) or from the menu select **File > New**
- Next select the **Add Solo Player** button, choose an instrument from the list, or simply start typing e.g. **piano** and then press the **Enter** key
- Press **Ctrl + 2** or click on the **Write** button in the top panel to change to Write mode.

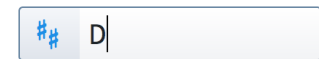
### Entering a Time Signature / Meter

- Select the rest at the start of the piece
- Press **Shift + M** for the Meter popover
- In the popover type the Meter you want, e.g. **6/8** and then press **Enter**



### Entering a Key Signature

- Select the rest or meter at the start of the piece
- Press **Shift + K** for the Key signatures popover
- In the popover type e.g. uppercase **D** for D major, or lowercase **d** for D minor. If you aren't sure, you can also type e.g. **3s** for 3 sharps, or **2b** for 2 flats.



### Adding more bars

- Dorico will automatically add bars as you write music, but if you want to add some more blank bars, select a barline and press **Shift + B** for the Bars and Barlines popover
- In the popover type e.g. **10** and press **Enter** to add 10 bars.

